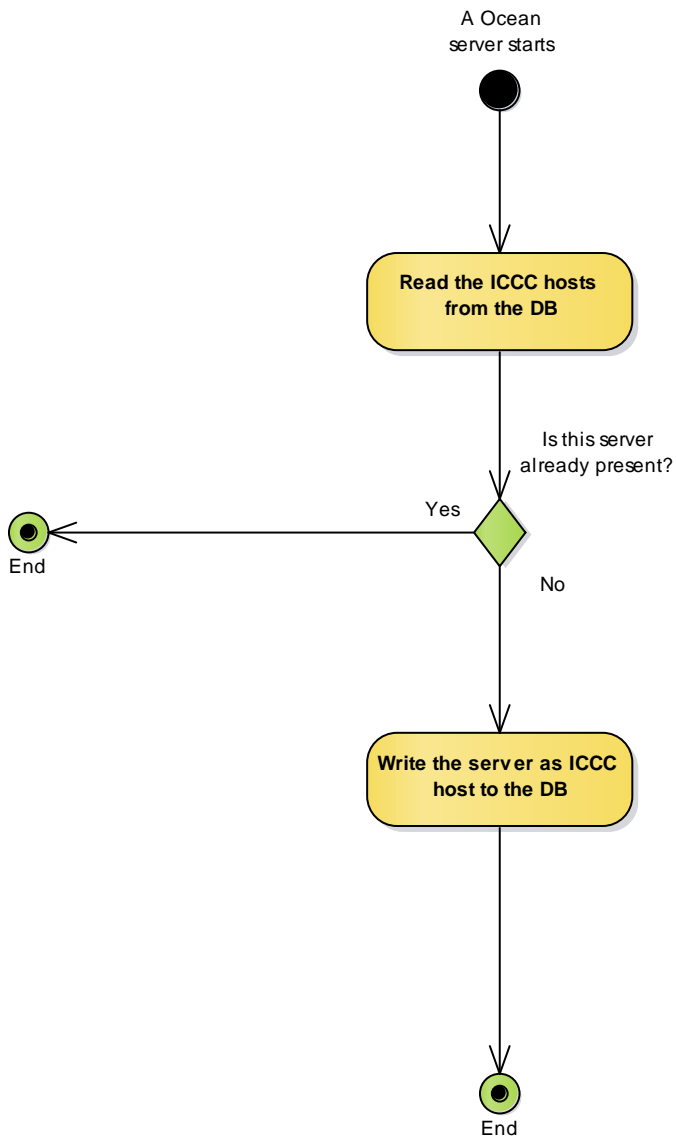


Ocean's ICCC Terminologies

Listener := An ICCC command at a given channel which is located on any or all of the servers

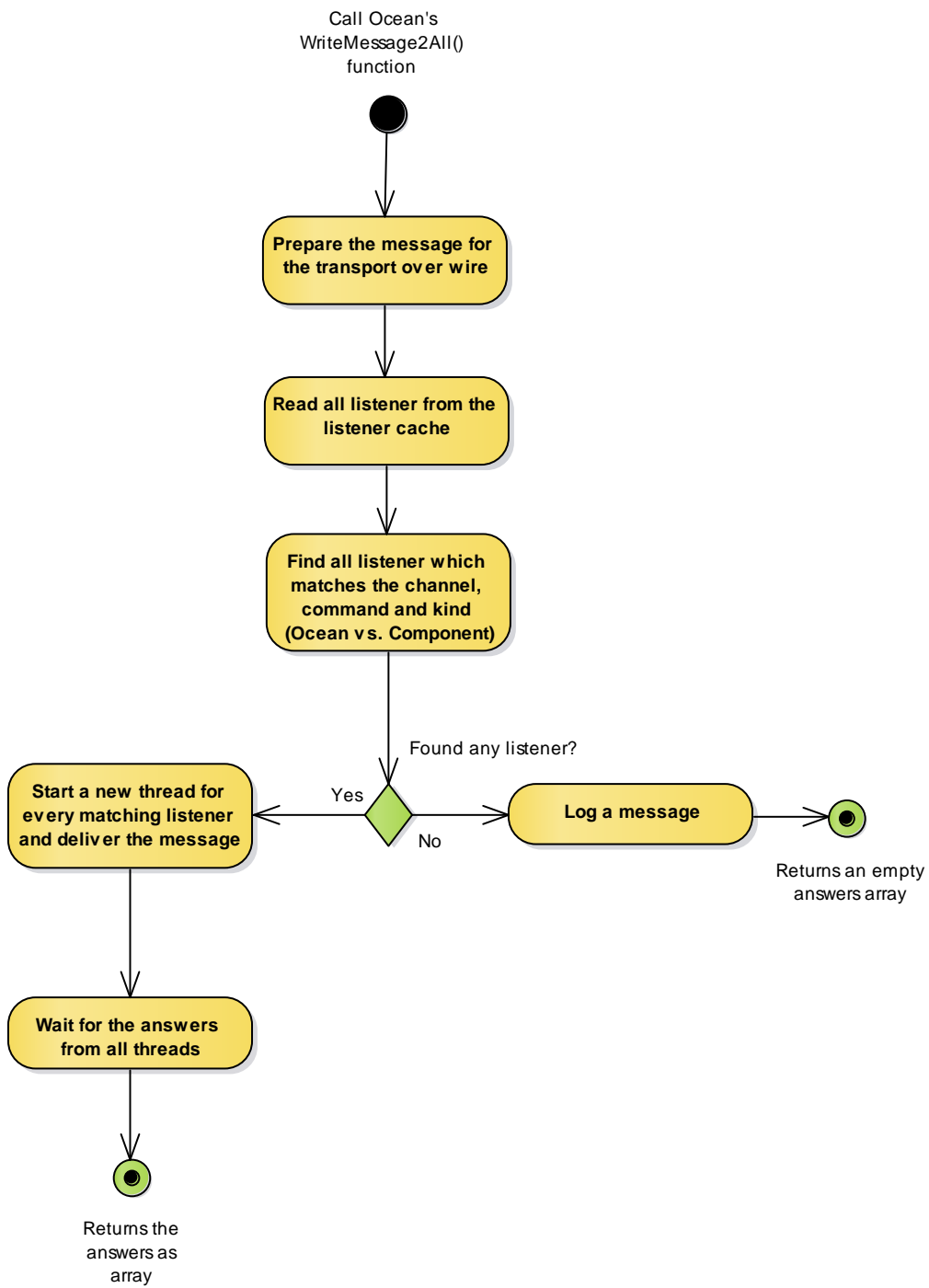
Host := An ICCC host is a server which provides at least one ICCC command. Thus, any host provides at least one listener.

Ocean's ICCC start-up

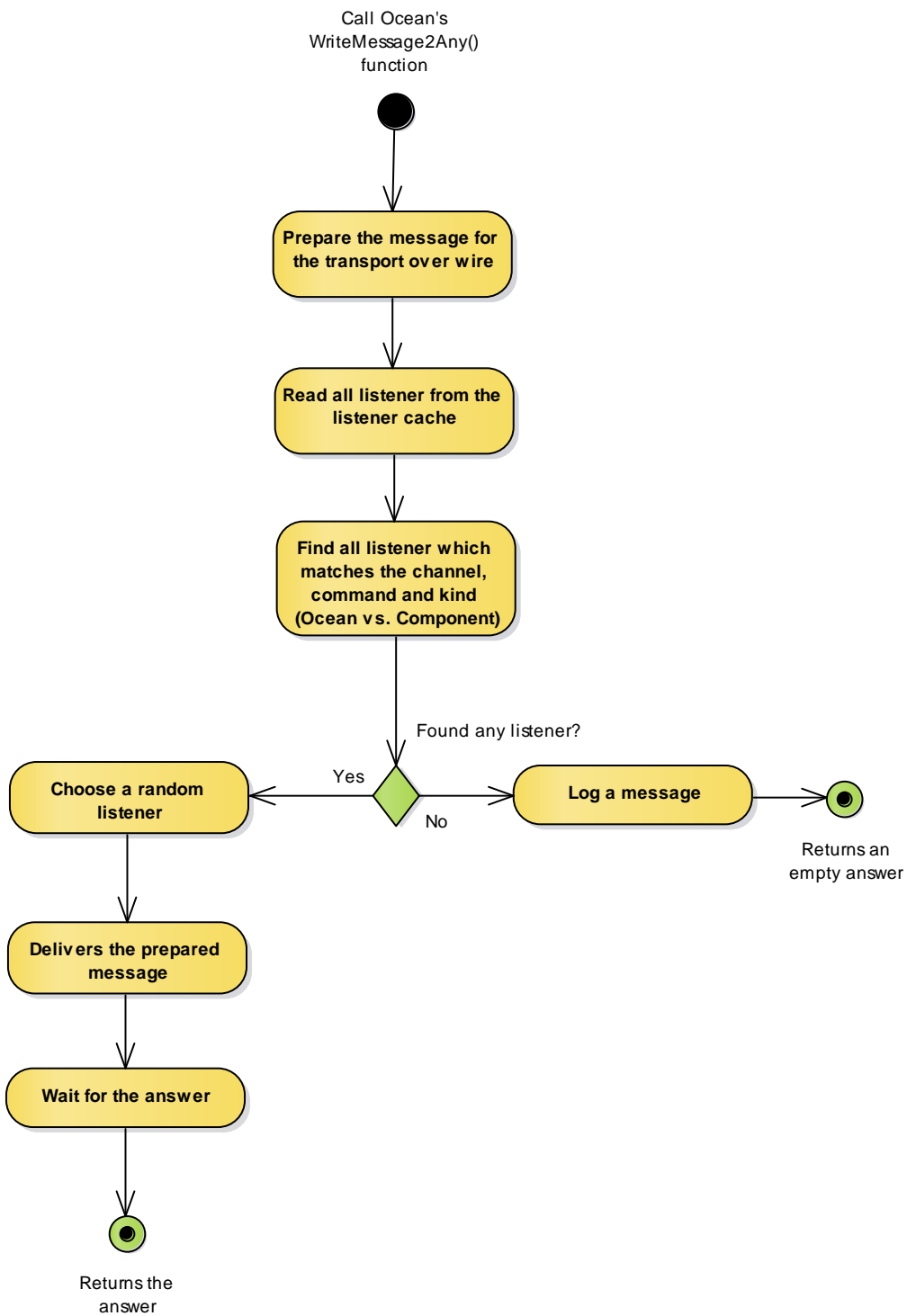


This diagram shows only the ICCC parts of Ocean's start-up process! Further, this diagram is only for Ocean true -- other external ICCC components e.g. with C#/.NET, Python, etc. are setting up differently.

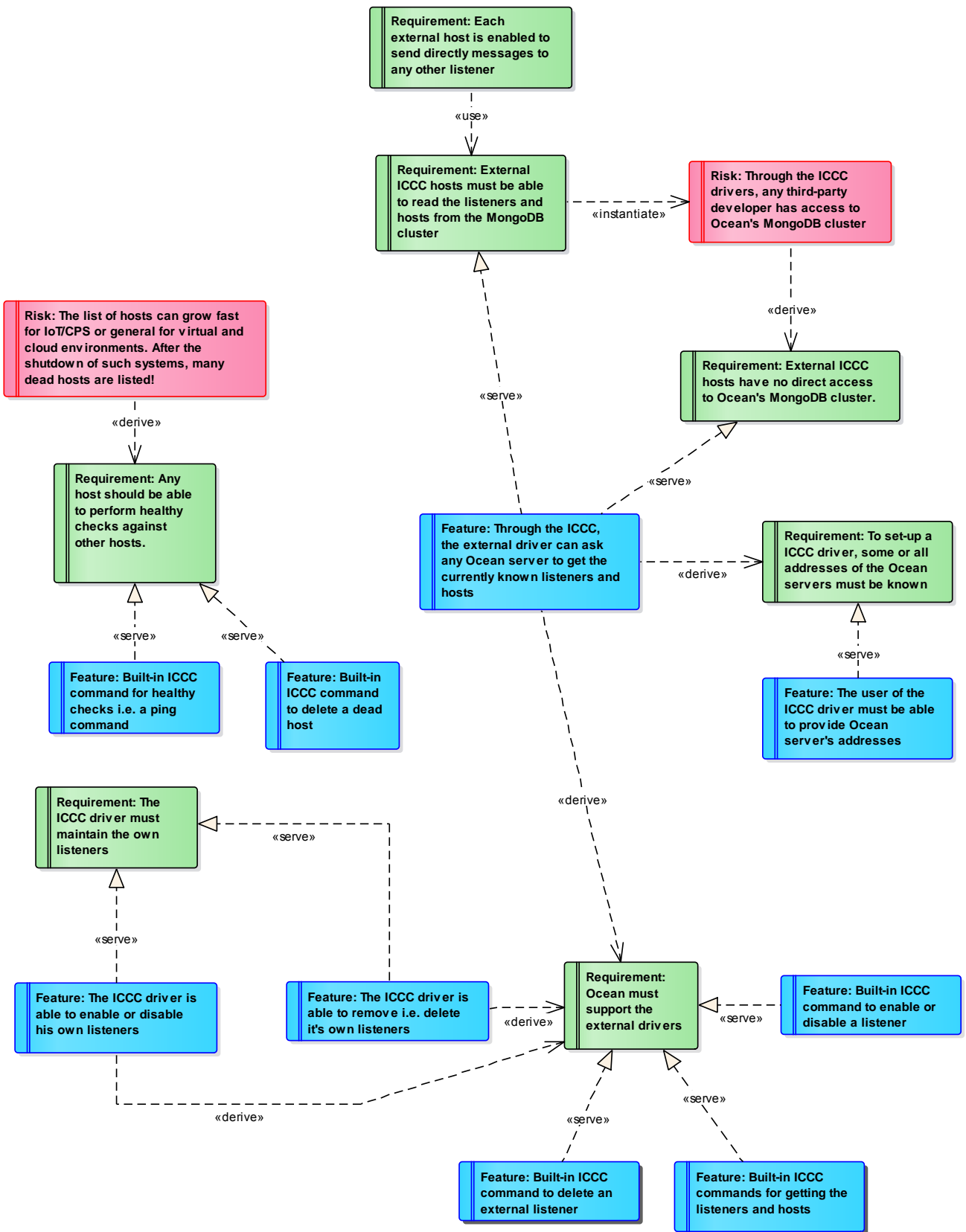
Ocean's WriteMessage2All() function



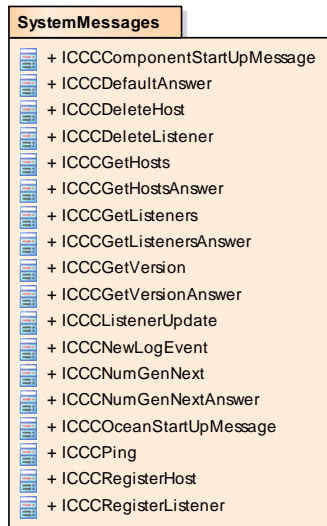
Ocean's WriteMessage2Any() function



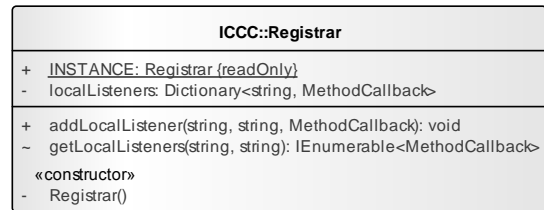
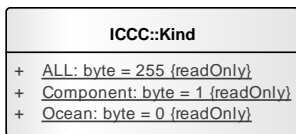
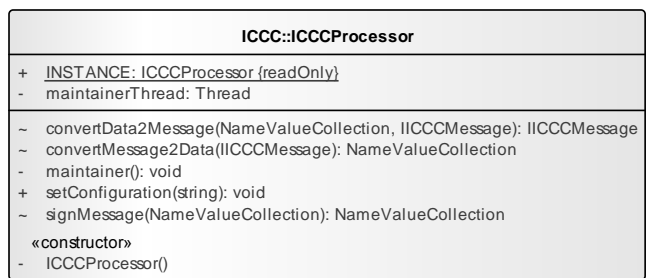
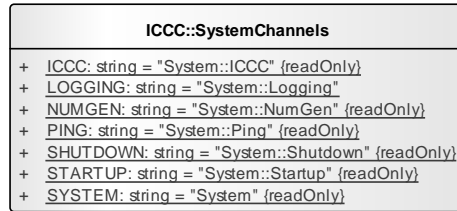
Requirements for ICCC drivers



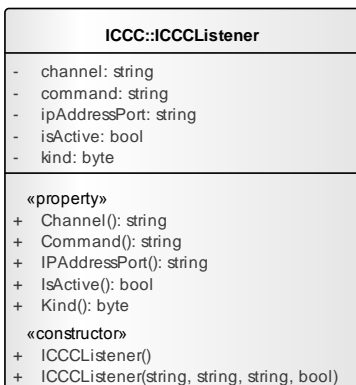
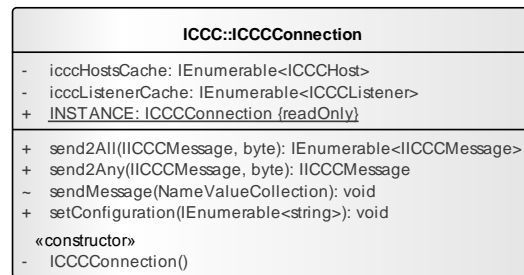
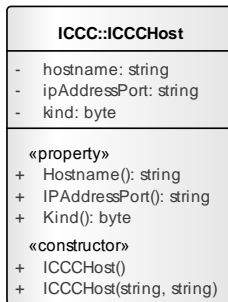
Class diagram for an Ocean ICC driver

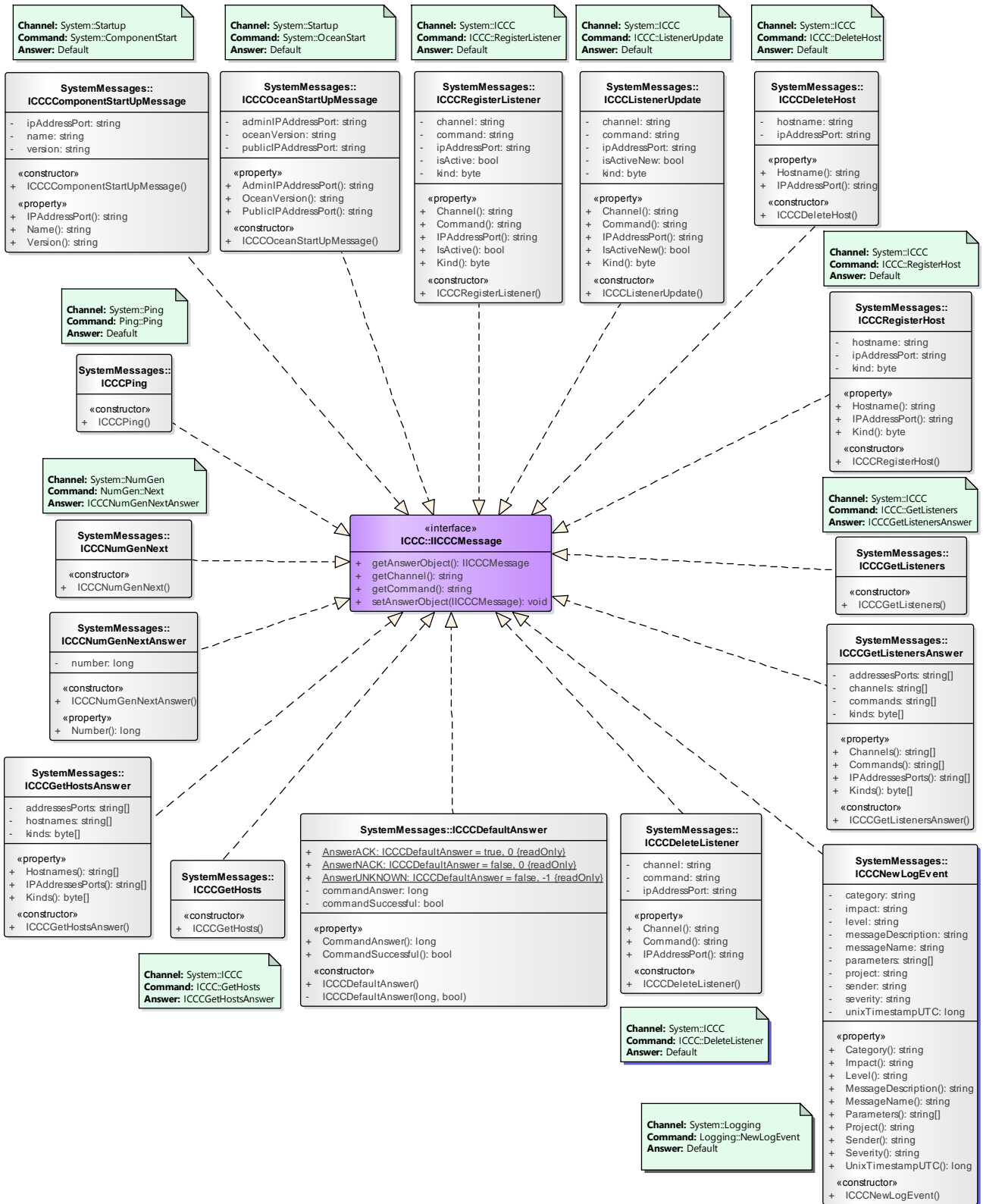


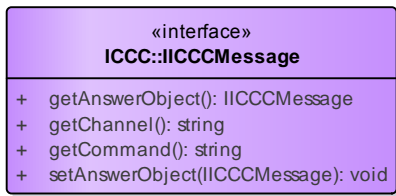
(from ICC)



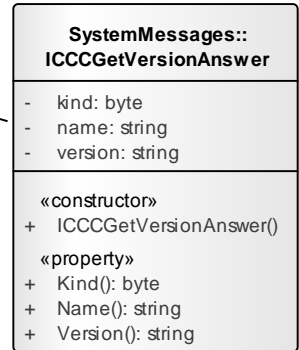
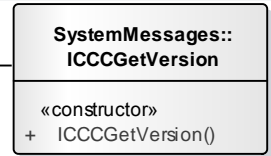
ICCCHost and ICCListener are classes to maintain lists with the current available entries.



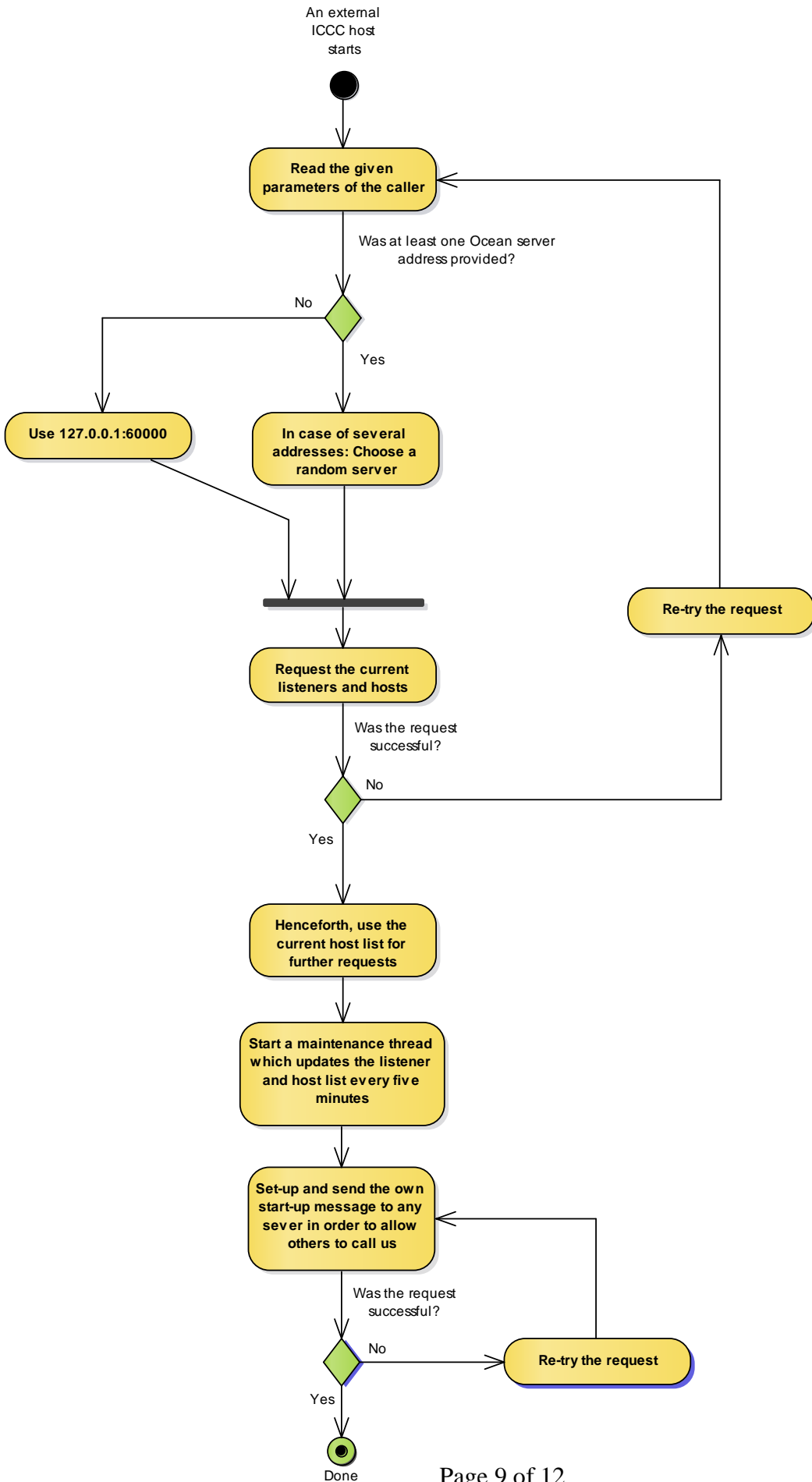




Channel: System
Command: System::Version
Answer: ICCCGetVersionAnswer



Start-up process for a external ICCC driver / host



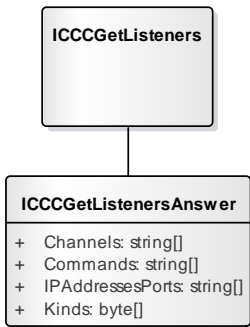
Documentation of ICCC Messages

Message: ICCCGetListeners

Channel: System::ICCC
Command: ICCC::GetListeners
Answer: ICCCGetListenersAnswer

Behavior Ocean internal:
 ... Send: Never, will use internal function
 ... Receive: Provides all known listeners

Behavior external components:
 ... Send: To obtain all listeners
 ... Receive: Never

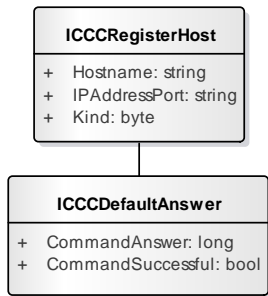


Message: ICCCRestHost

Channel: System::ICCC
Command: ICCC::RegisterHost
Answer: Default

Behavior Ocean internal:
 ... Send: Never, will use internal function
 ... Receive: Registers the host

Behavior external components:
 ... Send: To register own host
 ... Receive: Never

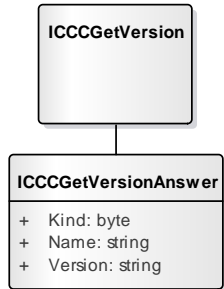


Message: ICCCGetVersion

Channel: System
Command: System::Version
Answer: ICCCGetVersionAnswer

Behavior Ocean internal:
 ... Send: On admin's request
 ... Receive: Reports own version; Kind=Ocean; Name=Hostname

Behavior external components:
 ... Send: On admin's request
 ... Receive: Reports own version; Kind=Component; Name=Component's name

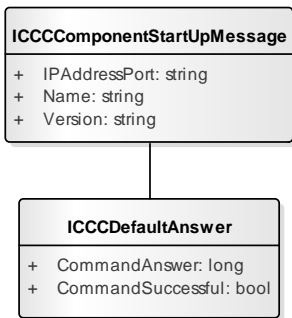


Message: ICCComponentStartUpMessage

Channel: System::Startup
Command: System::ComponentStart
Answer: Default

Behavior Ocean internal:
 ... Send: Never
 ... Receive: Log the content

Behavior external components:
 ... Send: After start-up
 ... Receive: Logging is possible

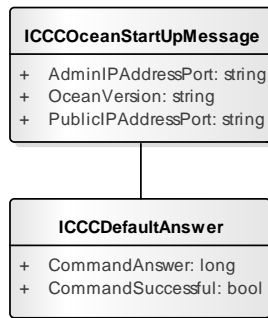


Message: ICCOceanStartUpMessage

Channel: System::Startup
Command: System::OceanStart
Answer: Default

Behavior Ocean internal:
 ... Send: After start-up of any Ocean server
 ... Receive: Log the content

Behavior external components:
 ... Send: Never
 ... Receive: Logging is possible

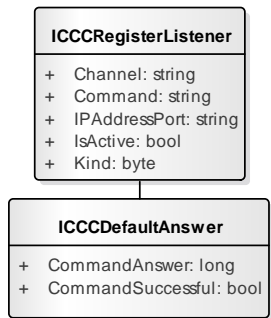


Message: ICCRegisterListener

Channel: System::ICCC
Command: ICCC::RegisterListener
Answer: Default

Behavior Ocean internal:
 ... Send: Never, will use internal function
 ... Receive: Register the listener

Behavior external components:
 ... Send: Anytime to register own listeners.
 ... Receive: Never

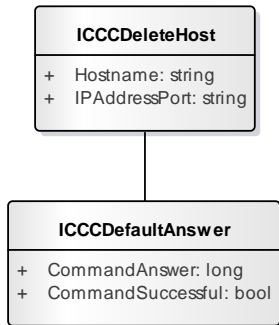


Message: ICCDeleteHost

Channel: System::ICCC
Command: ICC::DeleteHost
Answer: Default

Behavior Ocean internal:
 ... Send: To delete a dead host entry
 ... Receive: Delete the host

Behavior external components:
 ... Send: To delete own or dead host
 ... Receive: Never

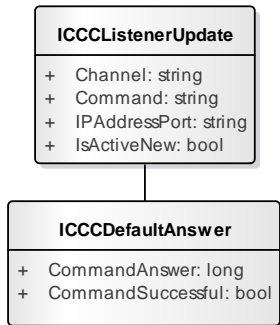


Message: ICCListenerUpdate

Channel: System::ICCC
Command: ICC::ListenerUpdate
Answer: Default

Behavior Ocean internal:
 ... Send: Never
 ... Receive: Update the IsActive status for this listener

Behavior external components:
 ... Send: To update known listeners
 ... Receive: Never

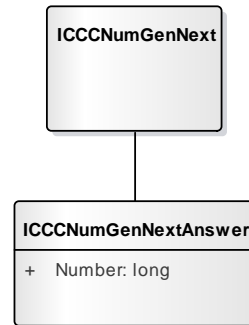


Message: ICCNumGenNext

Channel: System::NumGen
Command: NumGen::Next
Answer: ICCNumGenNextAnswer

Behavior Ocean internal:
 ... Send: Never, will use internal function
 ... Receive: Delivers a new unique number

Behavior external components:
 ... Send: To obtain a unique number
 ... Receive: Never

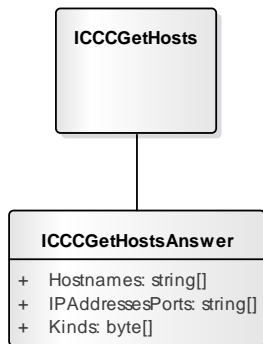


Message: ICCGetHosts

Channel: System::ICCC
Command: ICC::GetHosts
Answer: ICCGetHostsAnswer

Behavior Ocean internal:
 ... Send: Never, will use internal function
 ... Receive: Delivers current known hosts

Behavior external components:
 ... Send: To obtain all known hosts
 ... Receive: Never

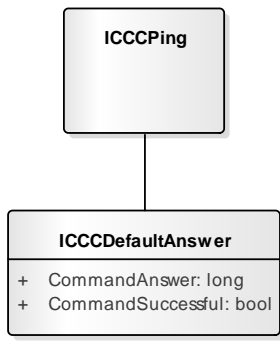


Message: ICCPing

Channel: System::Ping
Command: Ping::Ping
Answer: Default

Behavior Ocean internal:
 ... Send: To check the status of other hosts
 ... Receive: Assume the host as healthy

Behavior external components:
 ... Send: To check the status of other hosts
 ... Receive: Assume the host as healthy

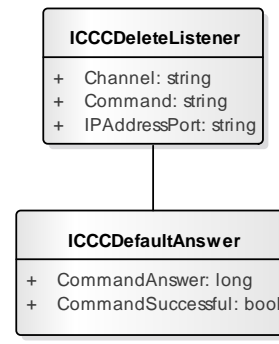


Message: ICCDeleteListener

Channel: System::ICCC
Command: ICC::DeleteListener
Answer: Default

Behavior Ocean internal:
 ... Send: Never, will use internal function
 ... Receive: Deletes the listener

Behavior external components:
 ... Send: To maintain listeners
 ... Receive: Never



Message: ICCCNewLogEvent

Channel: System::Logging

Command: Logging::NewLogEvent

Answer: Default

Behavior Ocean internal:

... Send: Never

... Receive: Bring-in the event to the logging

Behavior external components:

... Send: Anytime an interesting event occurs

... Receive: Never

