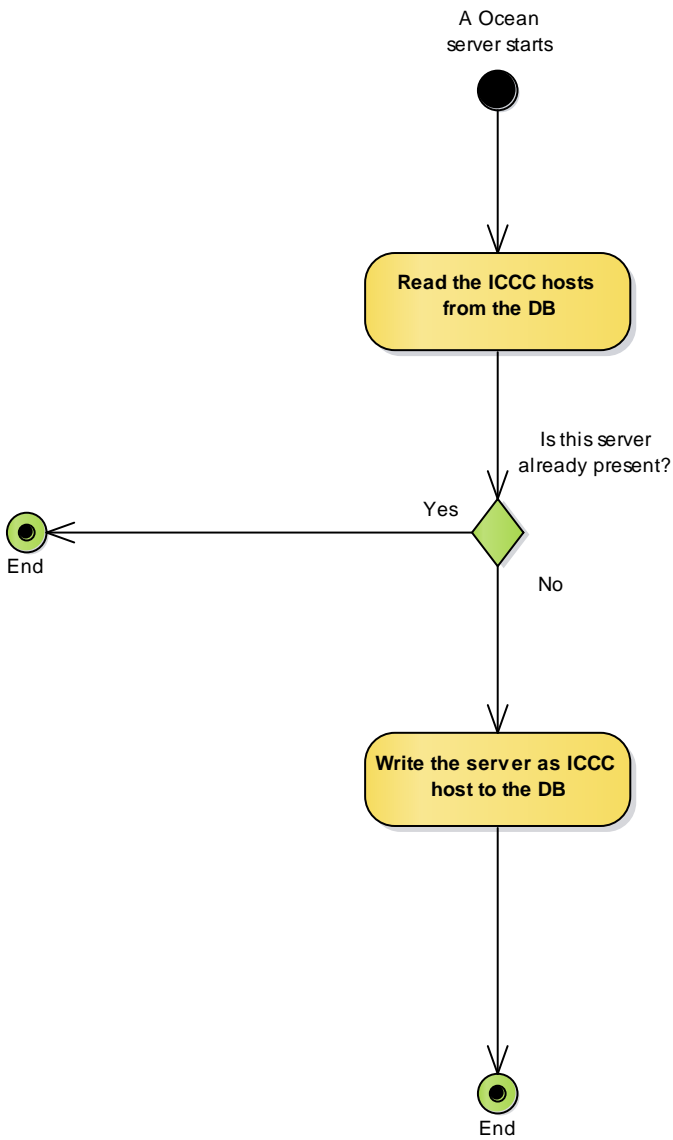


# Ocean's ICCC Terminologies

**Listener** := An ICCC command at a given channel which is located on any or all of the servers

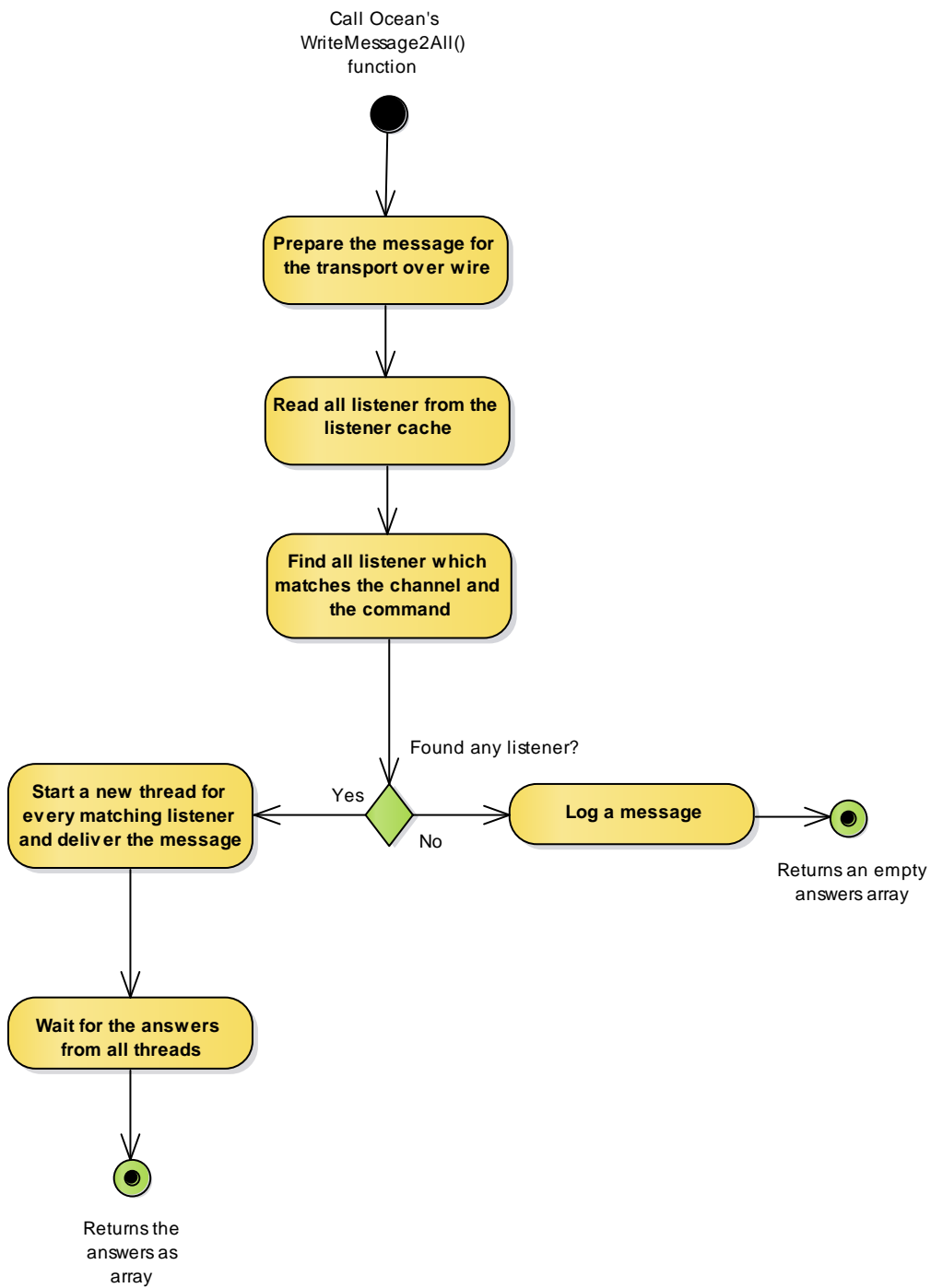
**Host** := An ICCC host is a server which provides at least one ICCC command. Thus, any host provides at least one listener.

# Ocean's ICCC start-up

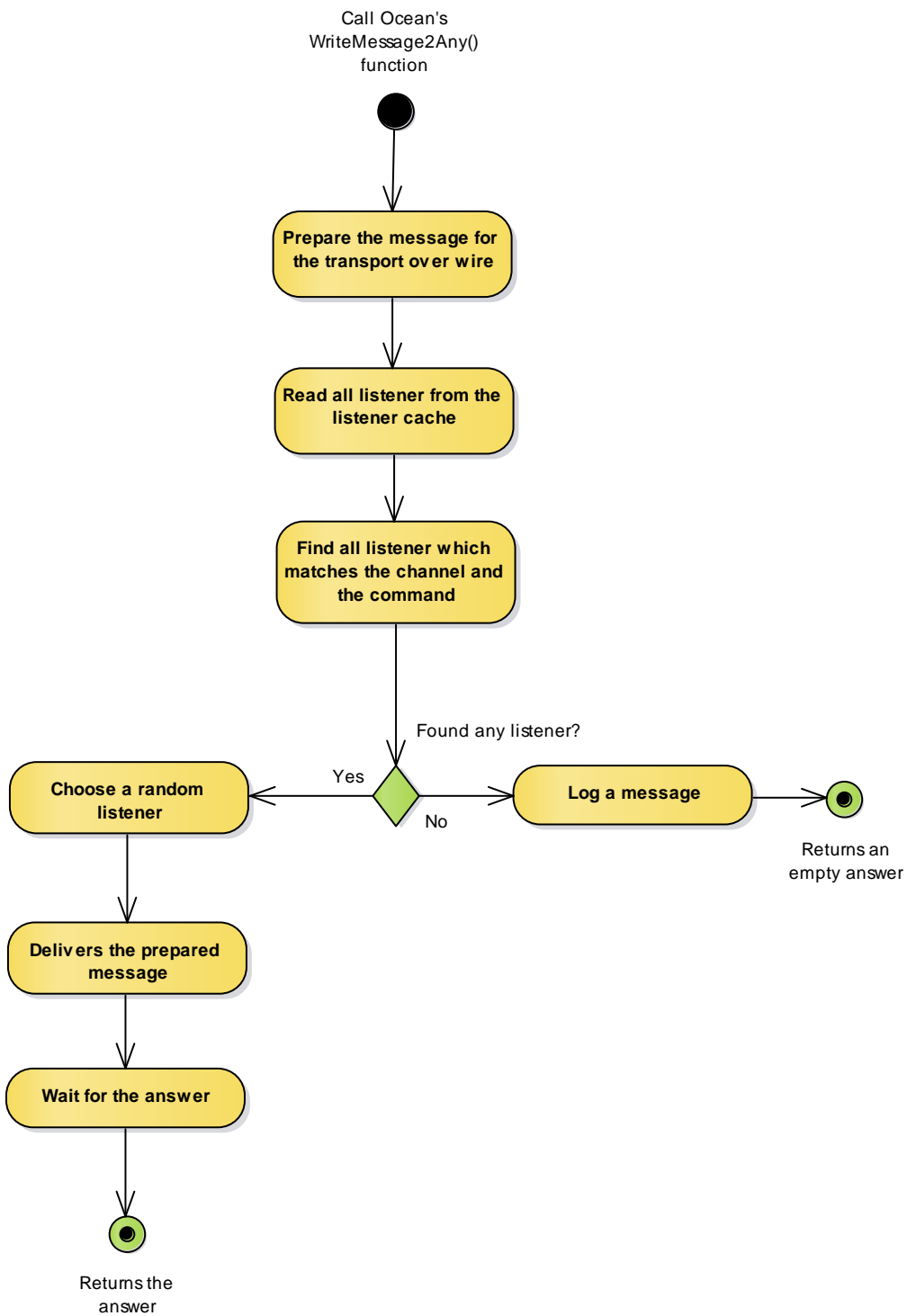


This diagram shows only the ICCC parts of Ocean's start-up process! Further, this diagram is only for Ocean true -- other external ICCC components e.g. with C#/.NET, Python, etc. are setting up differently.

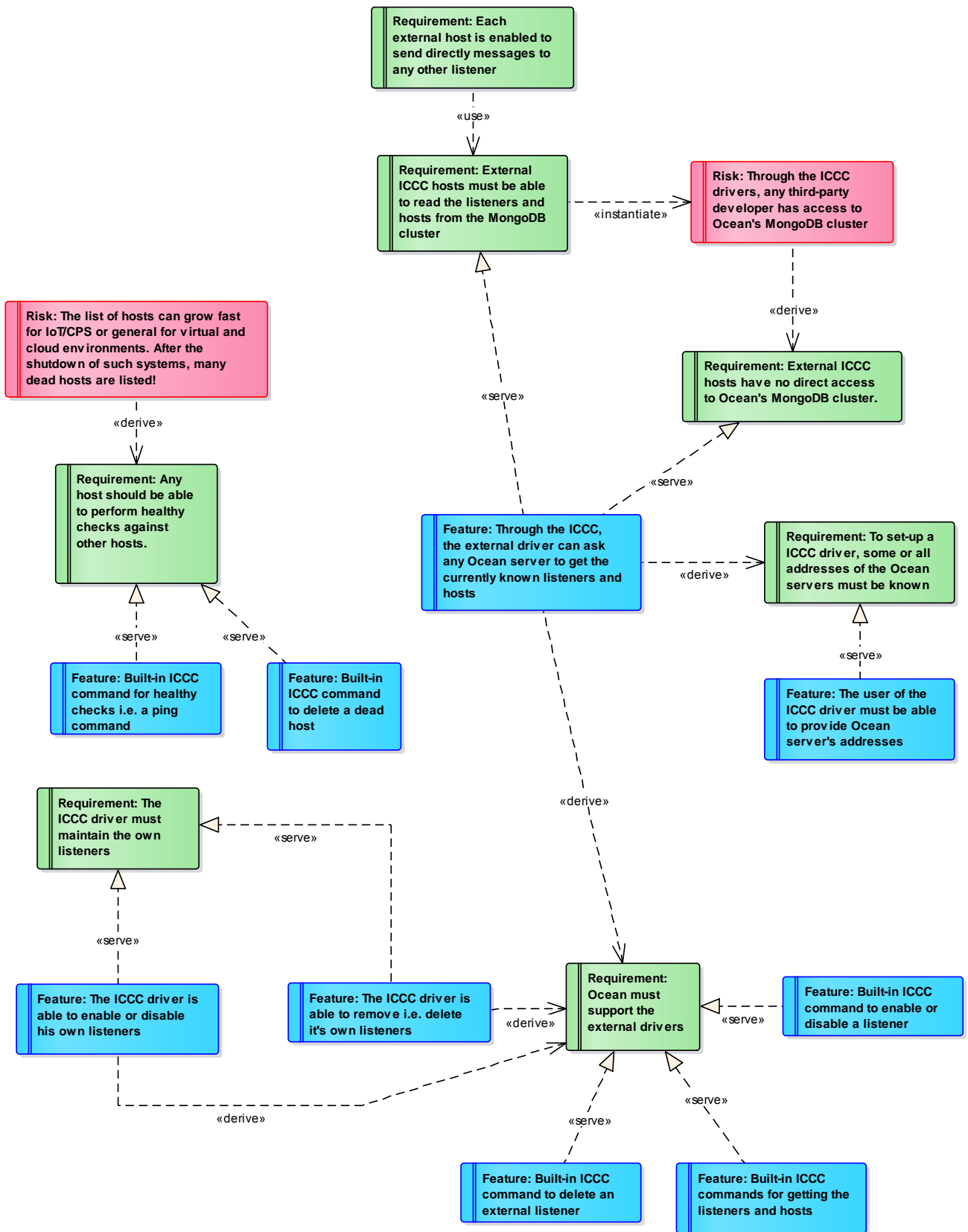
# Ocean's WriteMessage2All() function



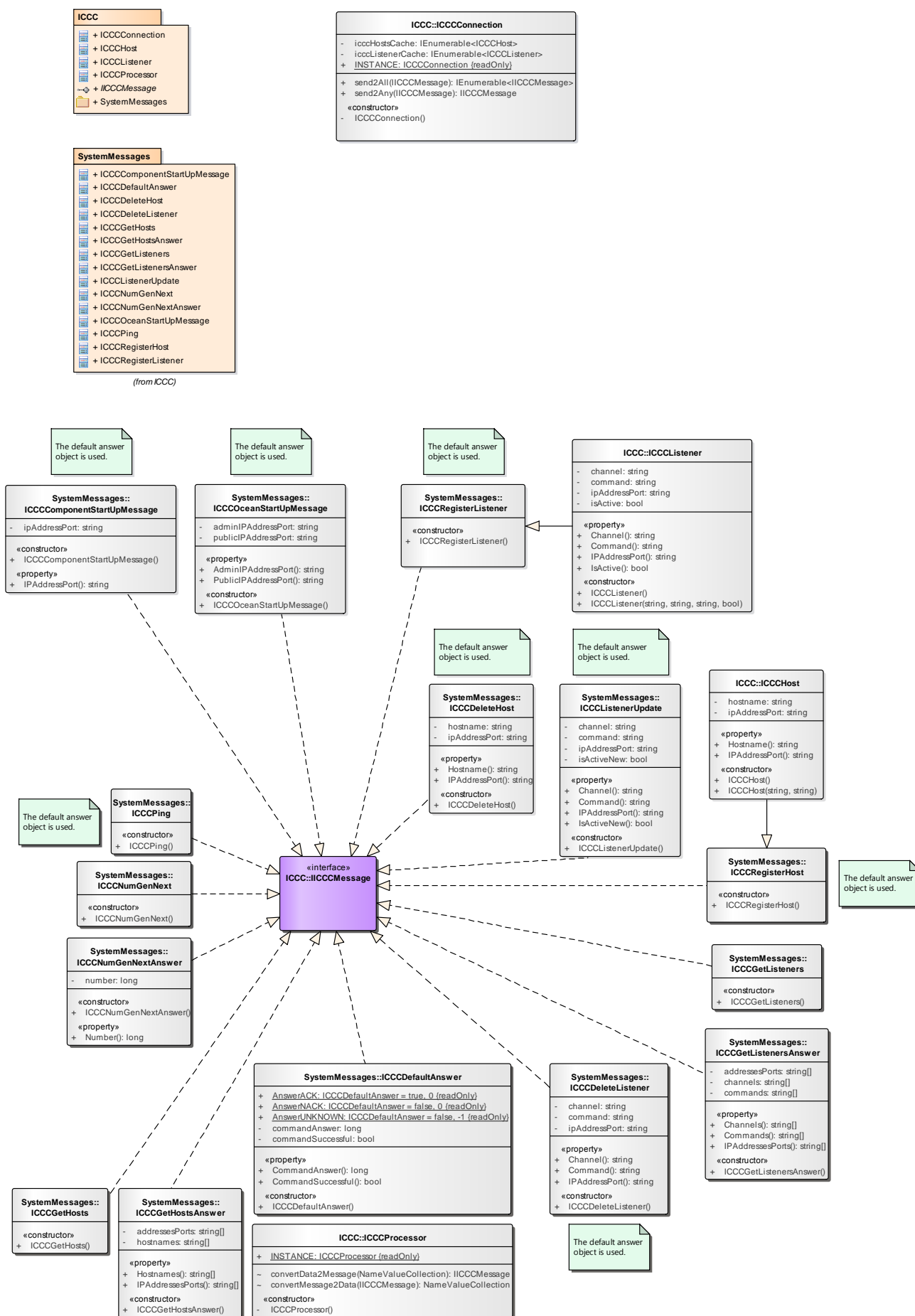
# Ocean's WriteMessage2Any() function



# Requirements for ICCC drivers



# Class diagram for an Ocean ICCC driver



# Start-up process for a external ICCC driver / host

