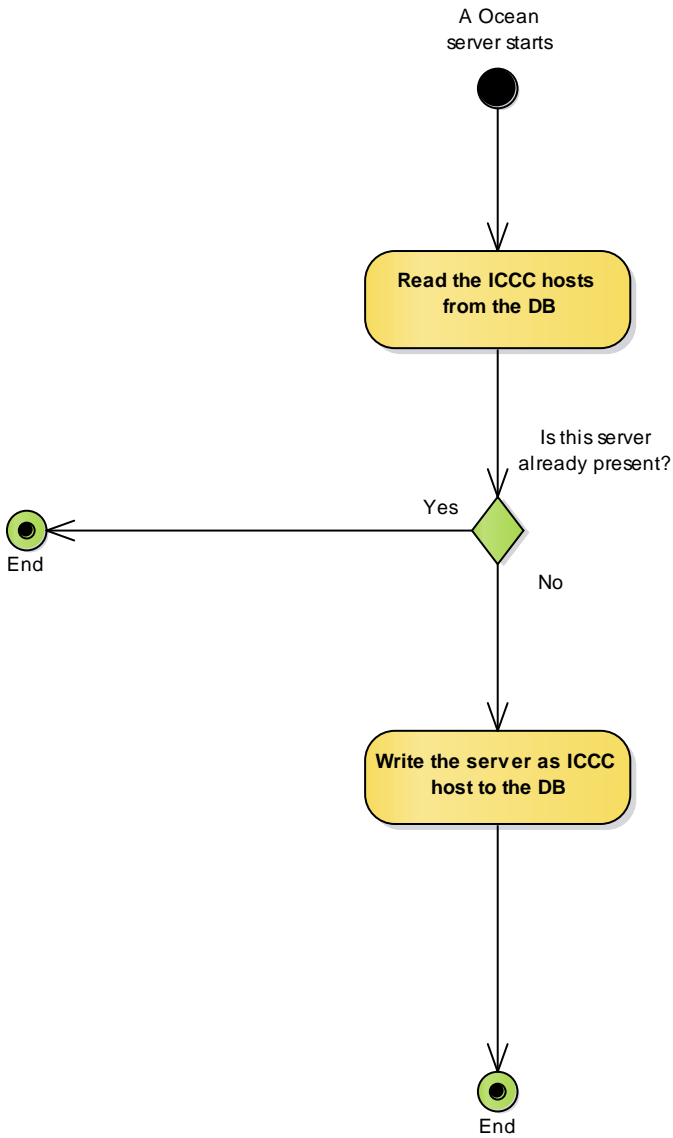


Ocean's ICCC Terminologies

Listener := An ICCC command at a given channel which is located on any or all of the servers

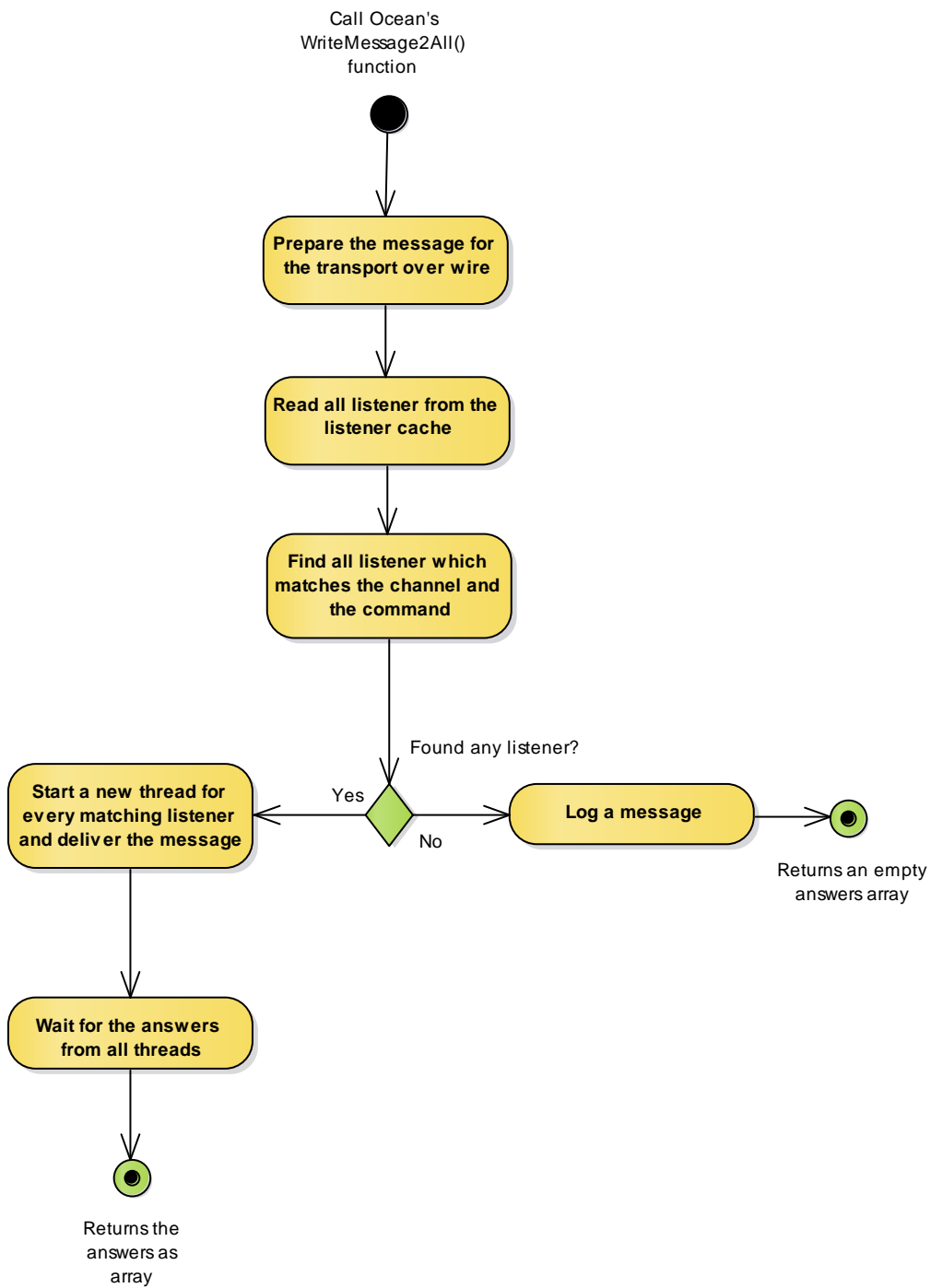
Host := An ICCC host is a server which provides at least one ICCC command. Thus, any host provides at least one listener.

Ocean's ICCC start-up

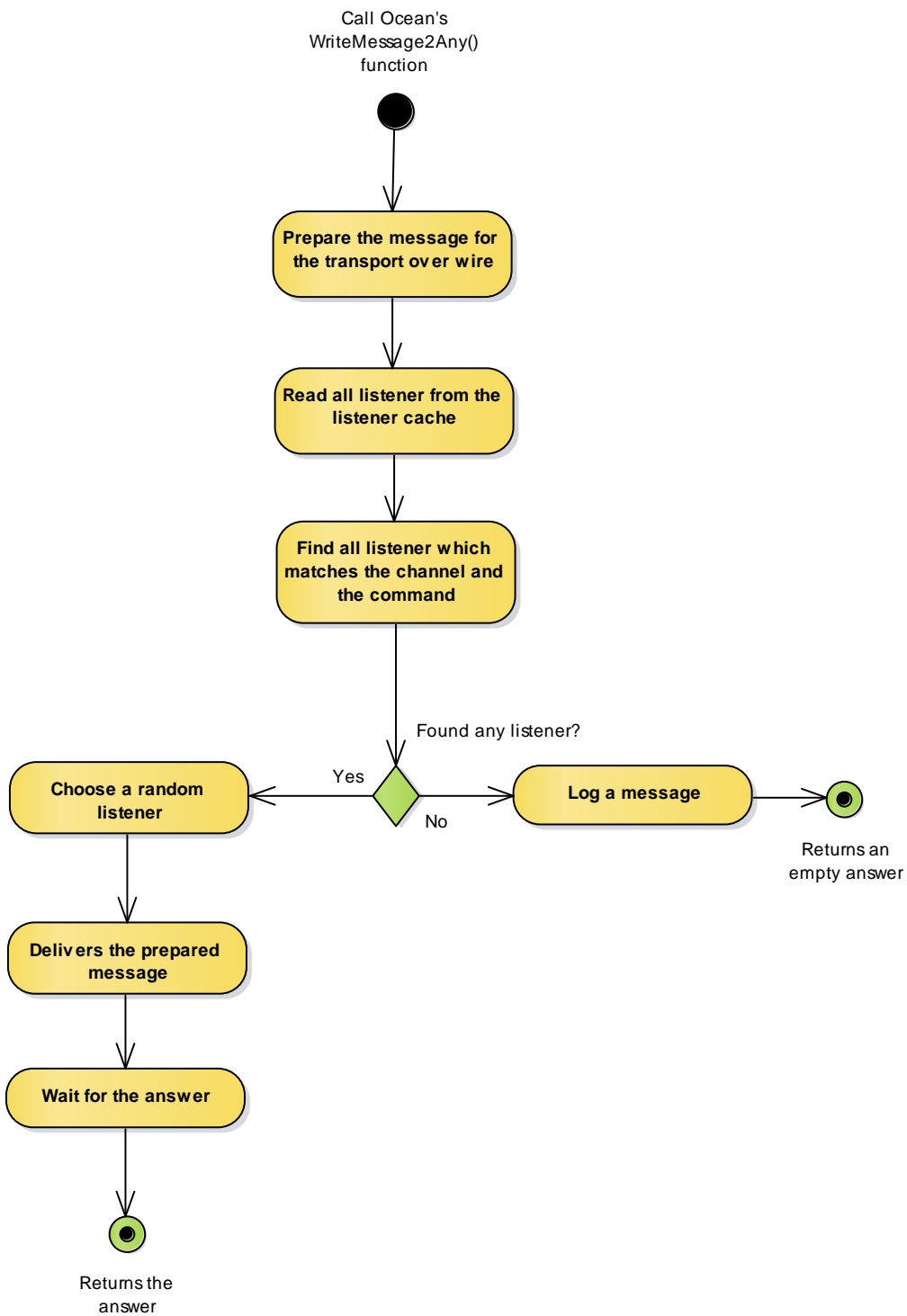


This diagram shows only the ICCC parts of Ocean's start-up process! Further, this diagram is only for Ocean true -- other external ICCC components e.g. with C#/.NET, Python, etc. are setting up differently.

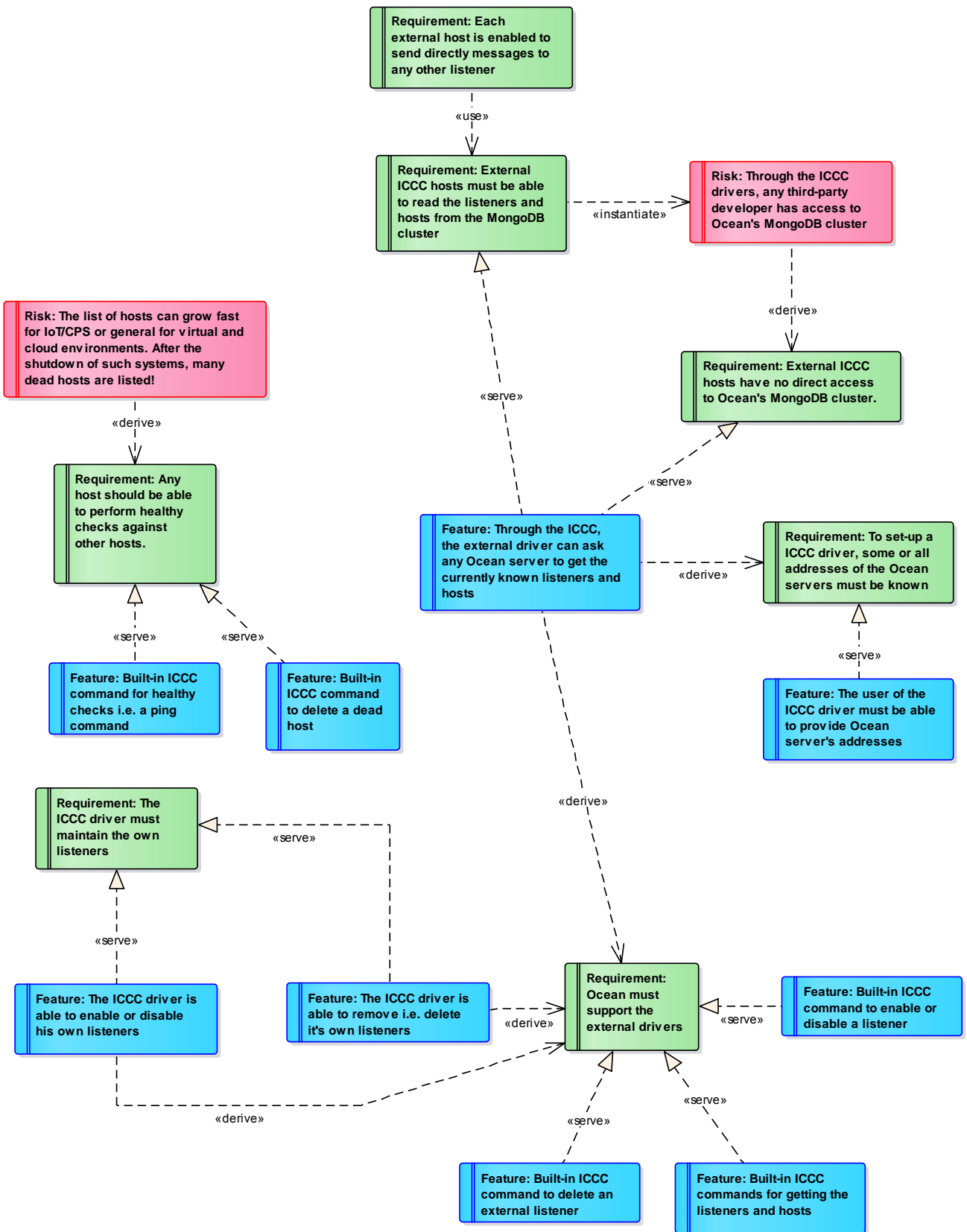
Ocean's WriteMessage2All() function



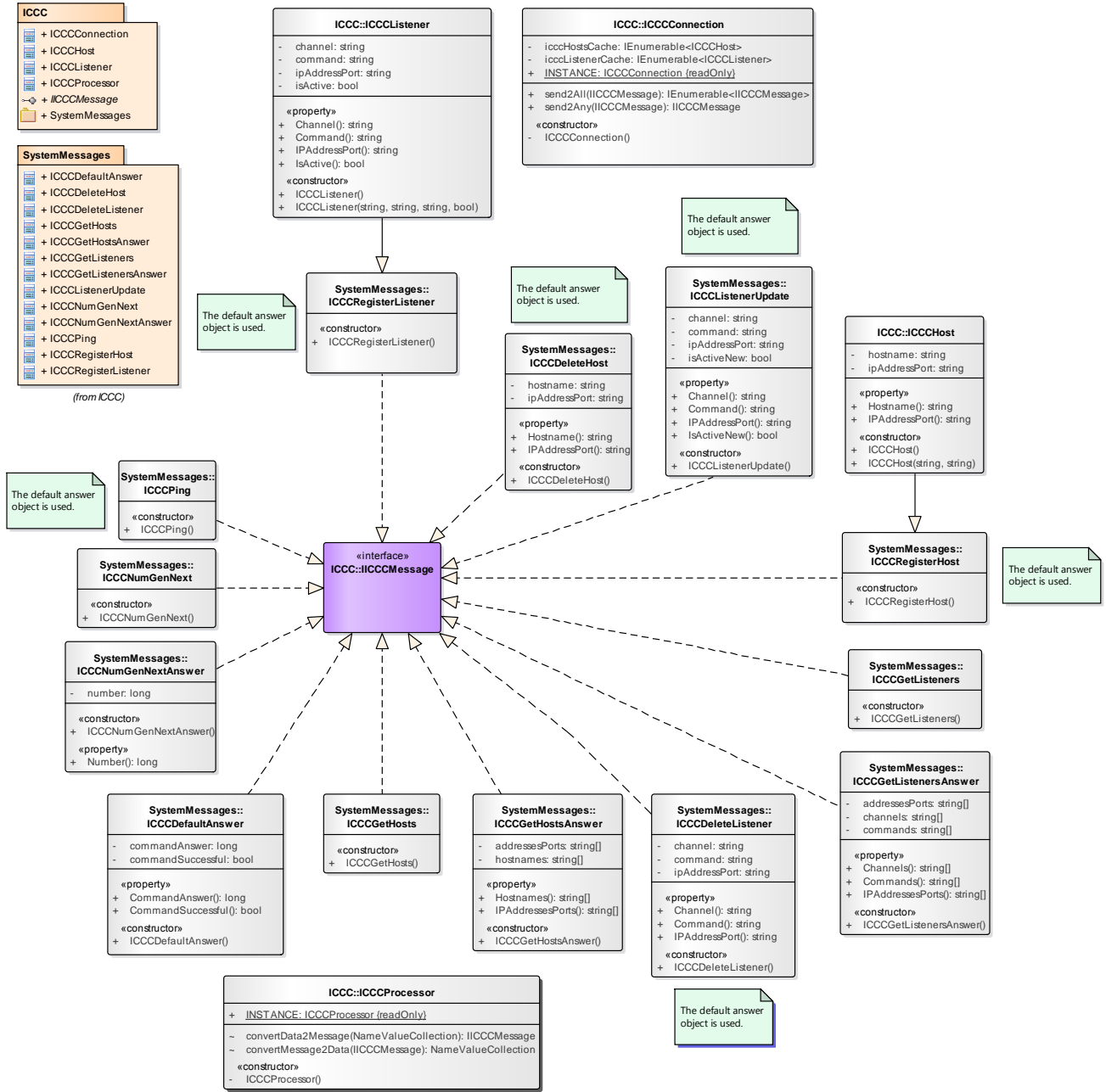
Ocean's WriteMessage2Any() function



Requirements for ICCC drivers



Class diagram for an Ocean ICC driver



Start-up process for a external ICCC driver / host

